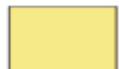




BLOCK P - GROUND FLOOR PLAN



 TYPE 1 - 2B + 2T - 98.69 sqm (1062 sft)

 TYPE 2 - 2B + 2T + Study - 119.66 sqm (1288 sft)

 TYPE 3 - 3B + 3T - 152.23 sqm (1639 sft)

 TYPE 4 - 3B + 3T - 153.92 sqm (1657 sft)



The information depicted herein viz., master plans, floor plans, furniture layout, fittings, illustrations, specifications, designs, dimensions, rendered views, colours, amenities and facilities etc., are subject to change without notifications as may be required by the relevant authorities or the Developer's architect, and cannot form part of an offer or contract. Whilst every care is taken in providing this information, the Developer cannot be held liable for variations. All illustrations and pictures are artist's impression only.

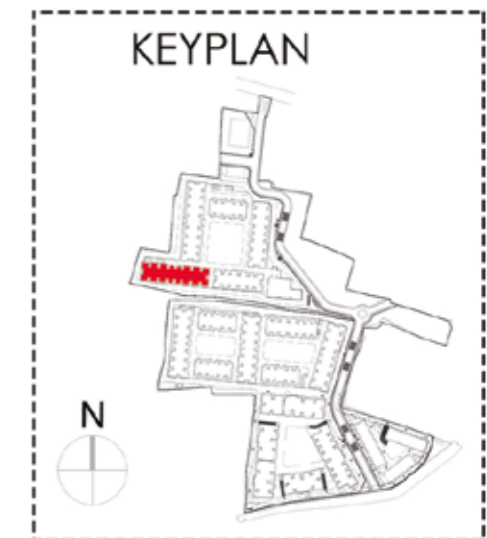
The information is subject to variations, additions, deletions, substitutions and modifications as may be recommended by the company's architect and/or the relevant authorities. The Developer is wholly exempt from any liability on account of any claim in this regards. (1 square metre = 10.764 square feet). E & OE.

All dimensions and calculations are done in metric system (M/Sq.m), and imperial system (Ft/ Sq.ft) shown is for reference only.

BLOCK P - FIRST FLOOR PLAN



- TYPE 1 - 2B + 2T - 98.69 sqm (1062 sft)
- TYPE 2 - 2B + 2T + Study - 119.66 sqm (1288 sft)
- TYPE 4 - 3B + 3T - 153.92 sqm (1657 sft)



The information depicted herein viz., master plans, floor plans, furniture layout, fittings, illustrations, specifications, designs, dimensions, rendered views, colours, amenities and facilities etc., are subject to change without notifications as may be required by the relevant authorities or the Developer's architect, and cannot form part of an offer or contract. Whilst every care is taken in providing this information, the Developer cannot be held liable for variations. All illustrations and pictures are artist's impression only.

The information is subject to variations, additions, deletions, substitutions and modifications as may be recommended by the company's architect and/or the relevant authorities. The Developer is wholly exempt from any liability on account of any claim in this regards. (1 square metre = 10.764 square feet). E & OE.

All dimensions and calculations are done in metric system (M/Sq.m), and imperial system (Ft/ Sq.ft) shown is for reference only.

BLOCK P - SECOND - SIXTH FLOOR PLAN



- TYPE 2 - 2B + 2T + Study - 119.66 sqm (1288 sft)
- TYPE 4 - 3B + 3T - 153.92 sqm (1657 sft)
- TYPE 5 - 3B + 3T - 174.45 sqm (1878 sft)

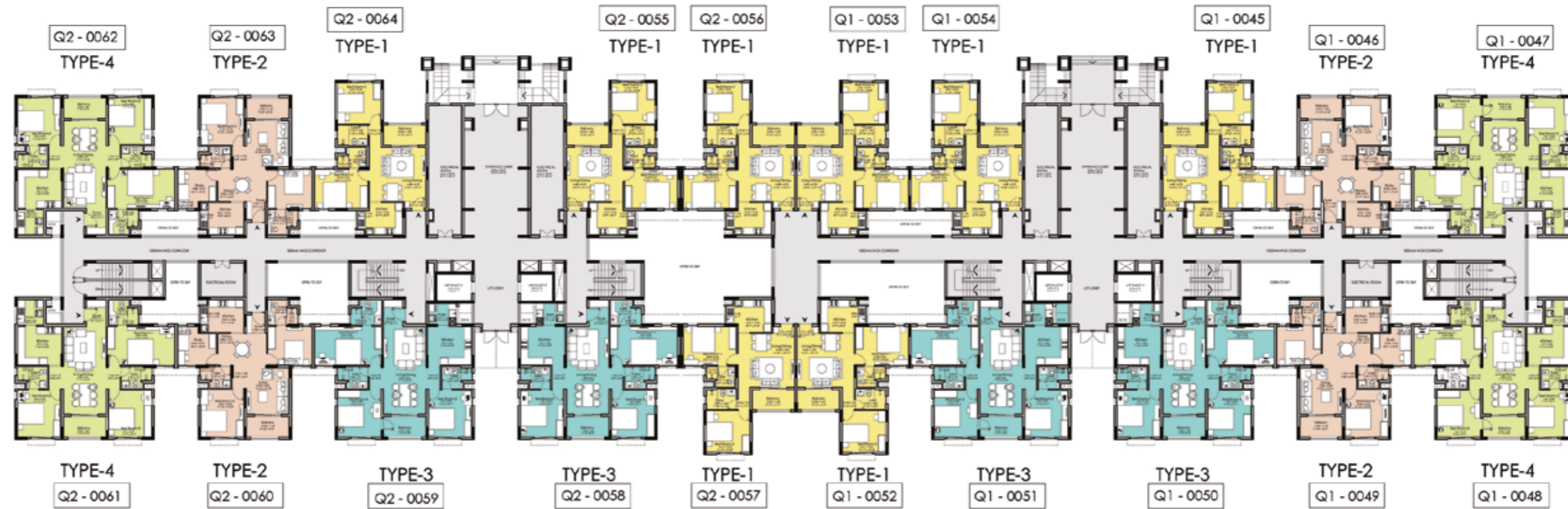


The information depicted herein viz., master plans, floor plans, furniture layout, fittings, illustrations, specifications, designs, dimensions, rendered views, colours, amenities and facilities etc., are subject to change without notifications as may be required by the relevant authorities or the Developer's architect, and cannot form part of an offer or contract. Whilst every care is taken in providing this information, the Developer cannot be held liable for variations. All illustrations and pictures are artist's impression only.

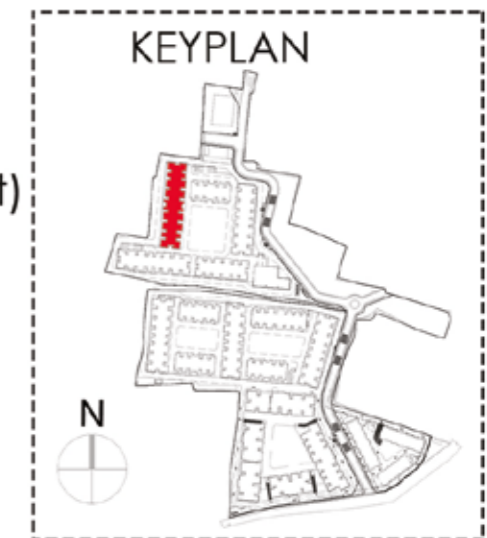
The information is subject to variations, additions, deletions, substitutions and modifications as may be recommended by the company's architect and/or the relevant authorities. The Developer is wholly exempt from any liability on account of any claim in this regards. (1 square metre = 10.764 square feet). E & OE.

All dimensions and calculations are done in metric system (M/Sq.m), and imperial system (Ft/ Sq.ft) shown is for reference only.

BLOCK Q - GROUND FLOOR PLAN



- TYPE 1 - 2B + 2T - 98.69 sqm (1062 sft)
- TYPE 2 - 2B + 2T + Study - 119.66 sqm (1288 sft)
- TYPE 3 - 3B + 3T - 152.23 sqm (1639 sft)
- TYPE 4 - 3B + 3T - 153.92 sqm (1657 sft)



The information depicted herein viz., master plans, floor plans, furniture layout, fittings, illustrations, specifications, designs, dimensions, rendered views, colours, amenities and facilities etc., are subject to change without notifications as may be required by the relevant authorities or the Developer's architect, and cannot form part of an offer or contract. Whilst every care is taken in providing this information, the Developer cannot be held liable for variations. All illustrations and pictures are artist's impression only.

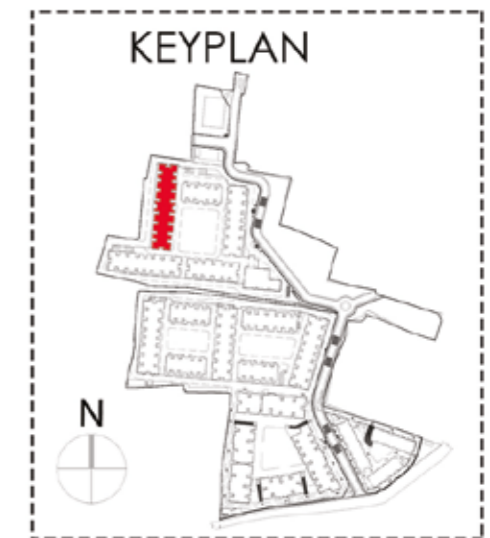
The information is subject to variations, additions, deletions, substitutions and modifications as may be recommended by the company's architect and/or the relevant authorities. The Developer is wholly exempt from any liability on account of any claim in this regards. (1 square metre = 10.764 square feet). E & OE.

All dimensions and calculations are done in metric system (M/Sq.m), and imperial system (Ft/ Sq.ft) shown is for reference only.

BLOCK Q - FIRST FLOOR PLAN



- TYPE 1 - 2B + 2T - 98.69 sqm (1062 sft)
- TYPE 2 - 2B + 2T + Study - 119.66 sqm (1288 sft)
- TYPE 4 - 3B + 3T - 153.92 sqm (1657 sft)





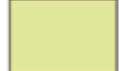

The information depicted herein viz., master plans, floor plans, furniture layout, fittings, illustrations, specifications, designs, dimensions, rendered views, colours, amenities and facilities etc., are subject to change without notifications as may be required by the relevant authorities or the Developer's architect, and cannot form part of an offer or contract. Whilst every care is taken in providing this information, the Developer cannot be held liable for variations. All illustrations and pictures are artist's impression only.

The information is subject to variations, additions, deletions, substitutions and modifications as may be recommended by the company's architect and/or the relevant authorities. The Developer is wholly exempt from any liability on account of any claim in this regards. (1 square metre = 10.764 square feet). E & OE.

All dimensions and calculations are done in metric system (M/Sq.m), and imperial system (Ft/ Sq.ft) shown is for reference only.

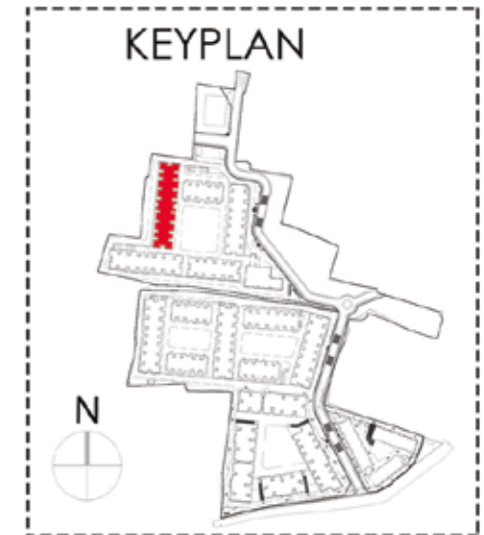
BLOCK Q - SECOND - SIXTH FLOOR PLAN



-  TYPE 1 - 2B + 2T - 98.69 sqm (1062 sft)
-  TYPE 2 - 2B + 2T + Study - 119.66 sqm (1288 sft)
-  TYPE 4 - 3B + 3T - 153.92 sqm (1657 sft)
-  TYPE 5 - 3B + 3T - 174.45 sqm (1878 sft)



N

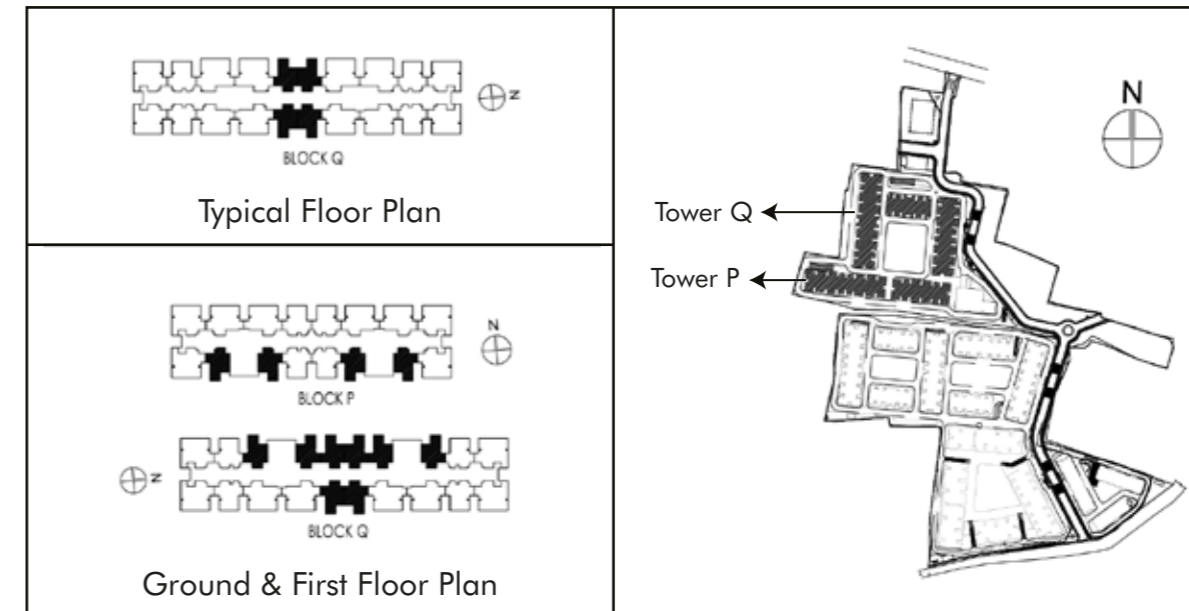


The information depicted herein viz., master plans, floor plans, furniture layout, fittings, illustrations, specifications, designs, dimensions, rendered views, colours, amenities and facilities etc., are subject to change without notifications as may be required by the relevant authorities or the Developer's architect, and cannot form part of an offer or contract. Whilst every care is taken in providing this information, the Developer cannot be held liable for variations. All illustrations and pictures are artist's impression only.

The information is subject to variations, additions, deletions, substitutions and modifications as may be recommended by the company's architect and/or the relevant authorities. The Developer is wholly exempt from any liability on account of any claim in this regards. (1 square metre = 10.764 square feet). E & OE.

All dimensions and calculations are done in metric system (M/Sq.m), and imperial system (Ft/ Sq.ft) shown is for reference only.

2 BHK + 2 T UNIT



SUPER BUILT UP AREA OF UNIT	CARPET AREA	BALCONY AREA
98.69 SQM / 1062 SQ.FT	63.03 SQ.M / 678 SQ.FT	5.14 SQ.M / 55 SQ.FT

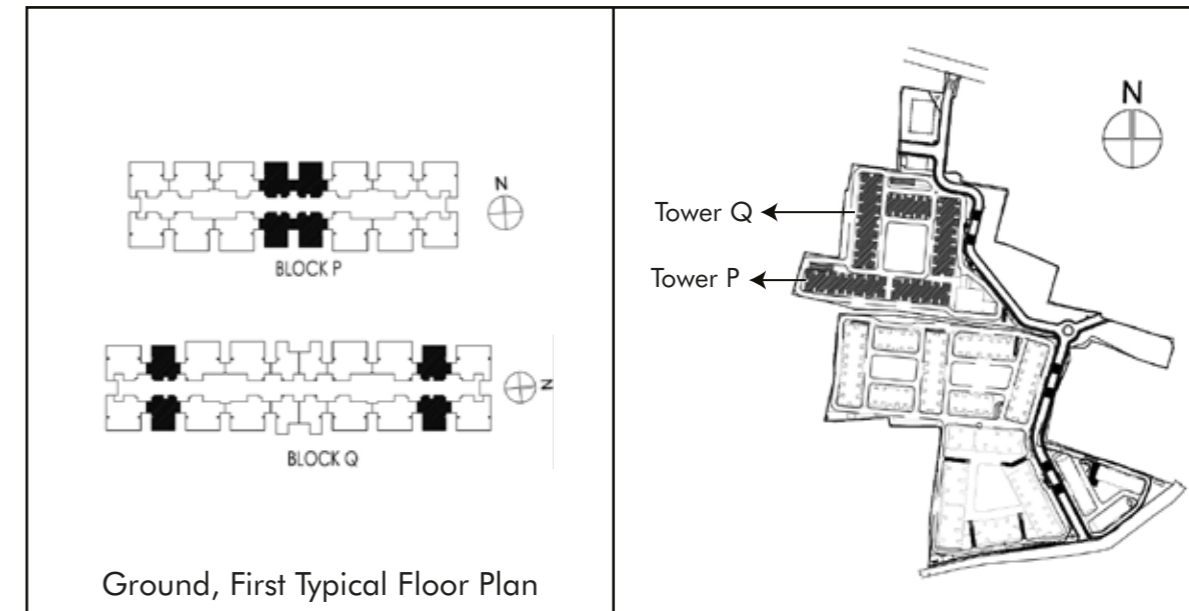
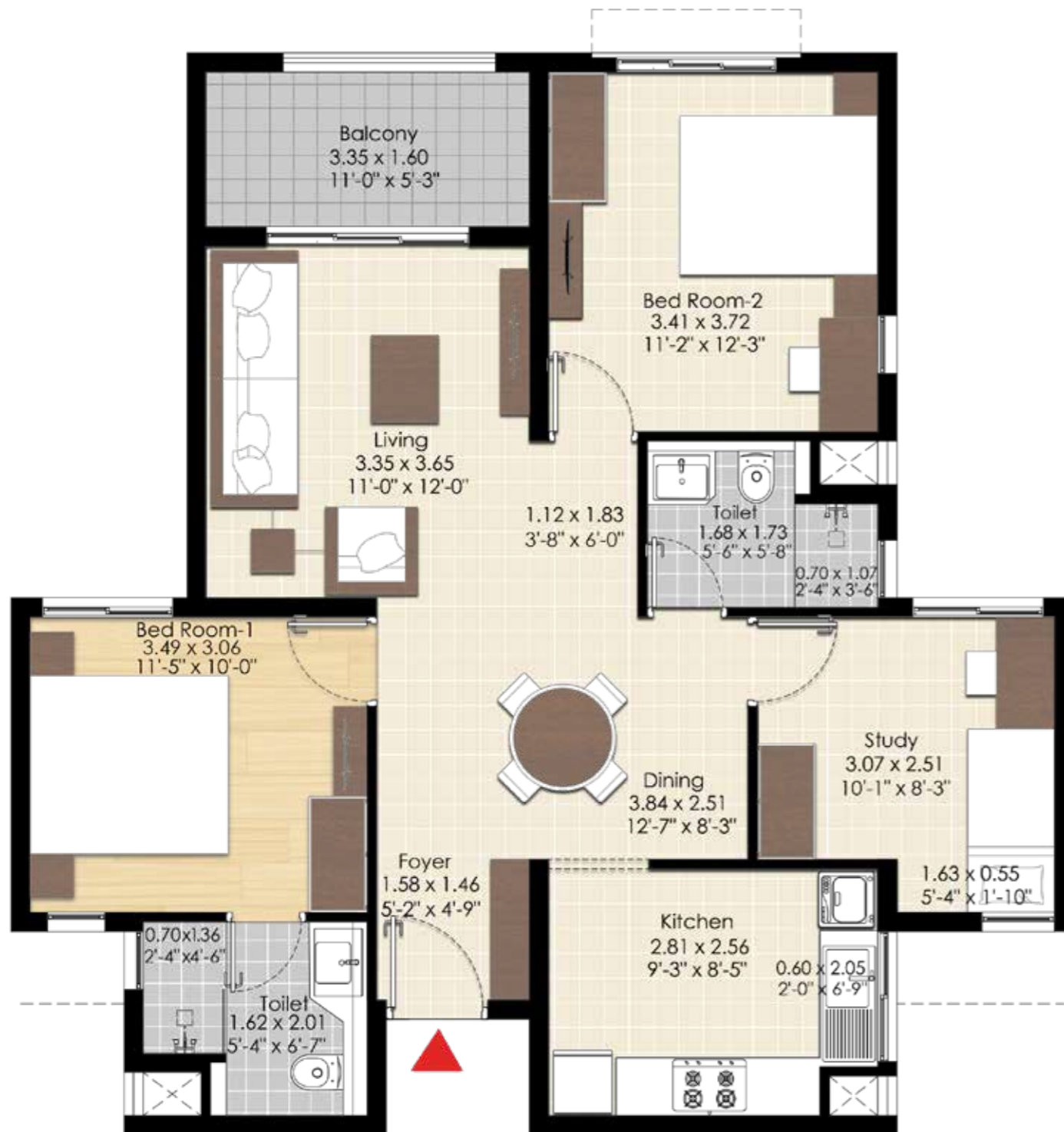
The information depicted herein viz., master plans, floor plans, furniture layout, fittings, illustrations, specifications, designs, dimensions, rendered views, colours, amenities and facilities etc., are subject to change without notifications as may be required by the relevant authorities or the Developer's architect, and cannot form part of an offer or contract. Whilst every care is taken in providing this information, the Developer cannot be held liable for variations. All illustrations and pictures are artist's impression only.

The information is subject to variations, additions, deletions, substitutions and modifications as may be recommended by the company's architect and/or the relevant authorities. The Developer is wholly exempt from any liability on account of any claim in this regards. (1 square metre = 10.764 square feet). E & OE.

All dimensions and calculations are done in metric system (M/Sq.m), and imperial system (Ft/ Sq.ft) shown is for reference only.

TNRERA Registration No.TN/29/Building/0018/2021 available on www.tnrera.in

2 BHK + STUDY UNIT



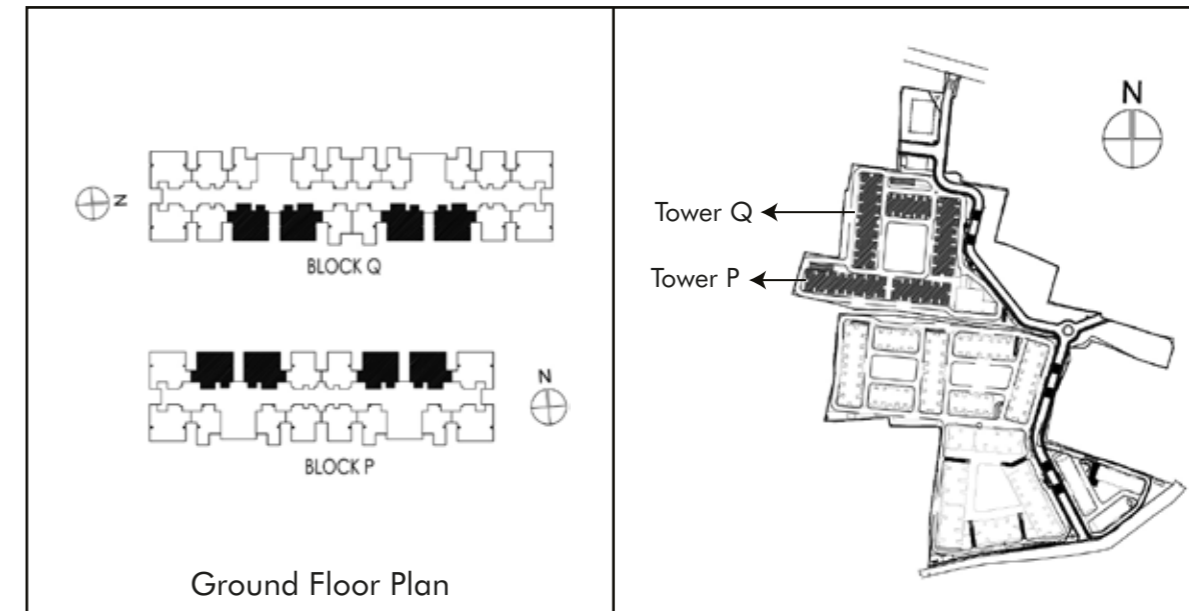
SUPER BUILT UP AREA OF UNIT	CARPET AREA	BALCONY AREA
119.66 SQM / 1288 SQ.FT	77.98 SQ.M / 839 SQ.FT	5.36 SQ.M / 58 SQ.FT

The information depicted herein viz., master plans, floor plans, furniture layout, fittings, illustrations, specifications, designs, dimensions, rendered views, colours, amenities and facilities etc., are subject to change without notifications as may be required by the relevant authorities or the Developer's architect, and cannot form part of an offer or contract. Whilst every care is taken in providing this information, the Developer cannot be held liable for variations. All illustrations and pictures are artist's impression only.

The information is subject to variations, additions, deletions, substitutions and modifications as may be recommended by the company's architect and/or the relevant authorities. The Developer is wholly exempt from any liability on account of any claim in this regards. (1 square metre = 10.764 square feet). E & OE.

All dimensions and calculations are done in metric system (M/Sq.m), and imperial system (Ft/ Sq.ft) shown is for reference only.

3 BHK + 3 T UNIT



SUPER BUILT UP AREA OF UNIT	CARPET AREA	BALCONY AREA
152.23 SQM / 1639 SQ.FT	101.80 SQ.M / 1095 SQ.FT	5.36 SQ.M / 58 SQ.FT

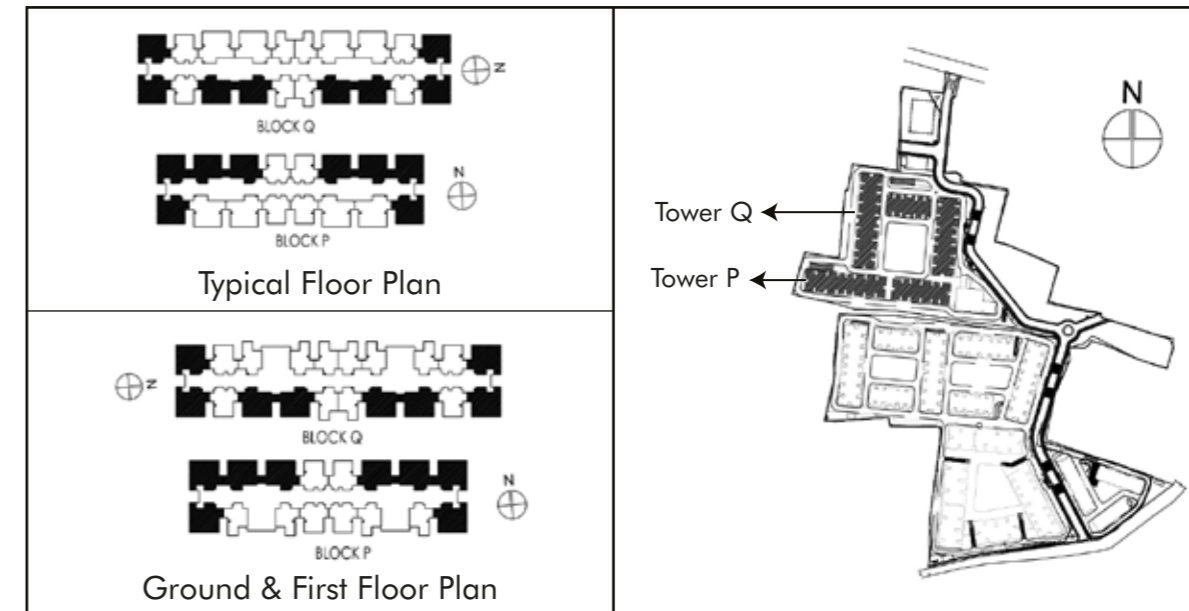
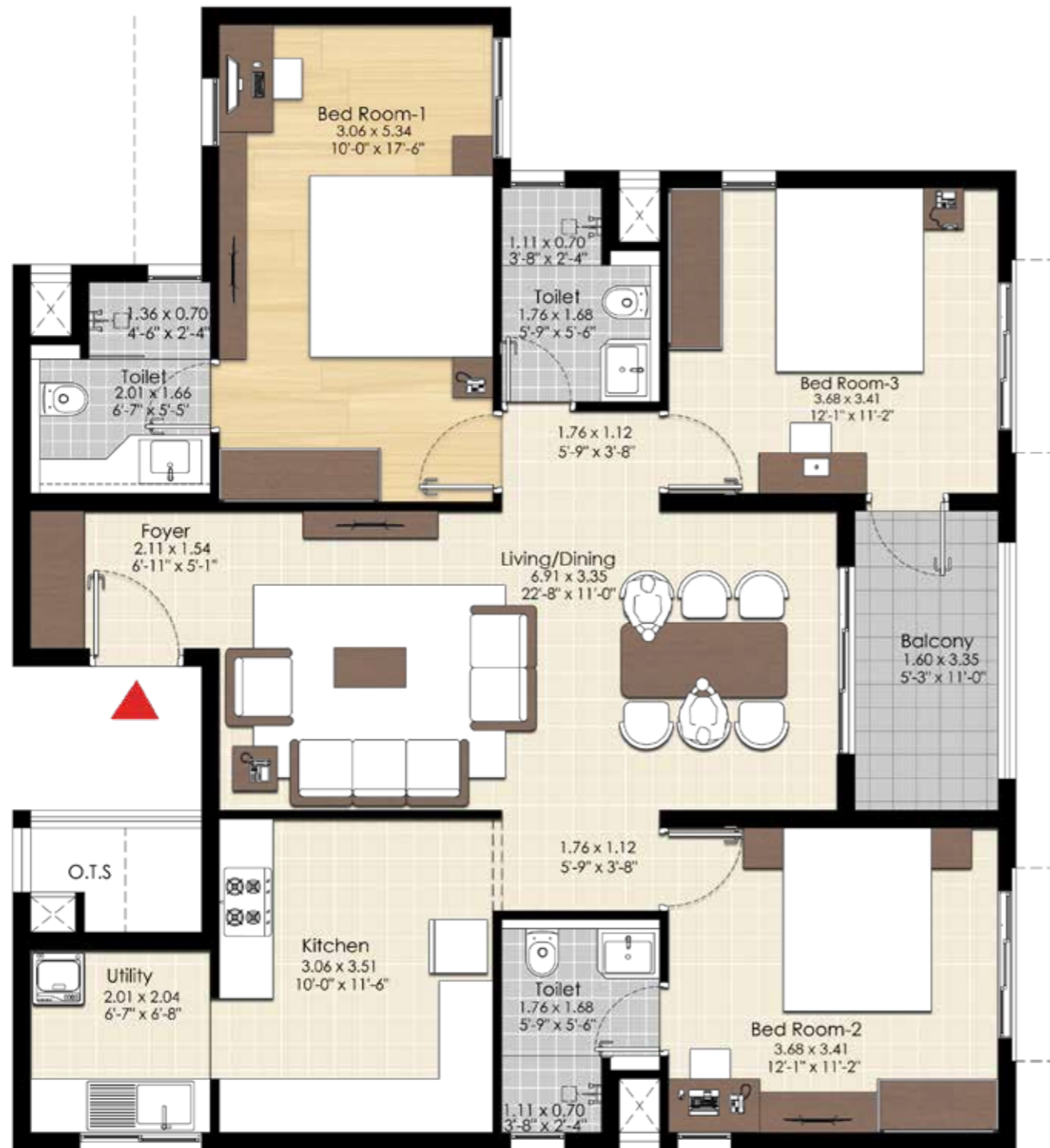
The information depicted herein viz., master plans, floor plans, furniture layout, fittings, illustrations, specifications, designs, dimensions, rendered views, colours, amenities and facilities etc., are subject to change without notifications as may be required by the relevant authorities or the Developer's architect, and cannot form part of an offer or contract. Whilst every care is taken in providing this information, the Developer cannot be held liable for variations. All illustrations and pictures are artist's impression only.

The information is subject to variations, additions, deletions, substitutions and modifications as may be recommended by the company's architect and/or the relevant authorities. The Developer is wholly exempt from any liability on account of any claim in this regards. (1 square metre = 10.764 square feet). E & OE.

All dimensions and calculations are done in metric system (M/Sq.m), and imperial system (Ft/ Sq.ft) shown is for reference only.

TNRERA Registration No.TN/29/Building/0018/2021 available on www.tnrera.in

3 BHK + 3 T UNIT



SUPER BUILT UP AREA OF UNIT	CARPET AREA	BALCONY AREA
153.92 SQM / 1657 SQ.FT	102.30 SQ.M / 1101 SQ.FT	5.36 SQ.M / 58 SQ.FT

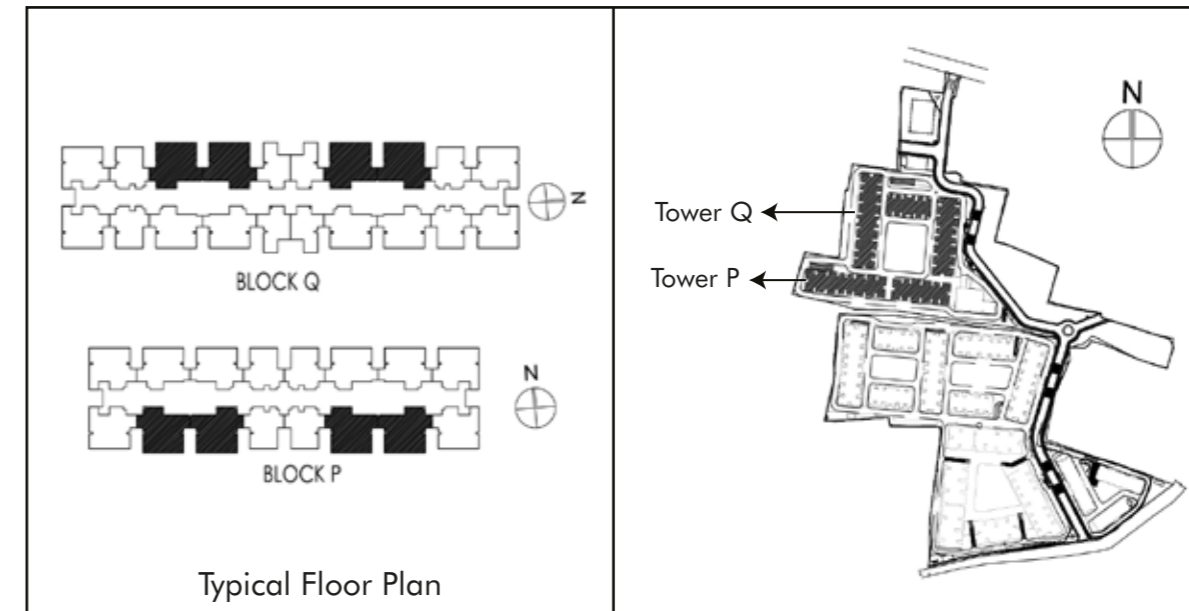
The information depicted herein viz., master plans, floor plans, furniture layout, fittings, illustrations, specifications, designs, dimensions, rendered views, colours, amenities and facilities etc., are subject to change without notifications as may be required by the relevant authorities or the Developer's architect, and cannot form part of an offer or contract. Whilst every care is taken in providing this information, the Developer cannot be held liable for variations. All illustrations and pictures are artist's impression only.

The information is subject to variations, additions, deletions, substitutions and modifications as may be recommended by the company's architect and/or the relevant authorities. The Developer is wholly exempt from any liability on account of any claim in this regards. (1 square metre = 10.764 square feet). E & OE.

All dimensions and calculations are done in metric system (M/Sq.m), and imperial system (Ft/ Sq.ft) shown is for reference only.

TNRERA Registration No.TN/29/Building/0018/2021 available on www.tnrera.in

3 BHK + 3 T UNIT



SUPER BUILT UP AREA OF UNIT	CARPET AREA	BALCONY AREA
174.45 SQM / 1878 SQ.FT	118.20 SQ.M / 1272 SQ.FT	5.36 SQ.M / 58 SQ.FT

The information depicted herein viz., master plans, floor plans, furniture layout, fittings, illustrations, specifications, designs, dimensions, rendered views, colours, amenities and facilities etc., are subject to change without notifications as may be required by the relevant authorities or the Developer's architect, and cannot form part of an offer or contract. Whilst every care is taken in providing this information, the Developer cannot be held liable for variations. All illustrations and pictures are artist's impression only.

The information is subject to variations, additions, deletions, substitutions and modifications as may be recommended by the company's architect and/or the relevant authorities. The Developer is wholly exempt from any liability on account of any claim in this regards. (1 square metre = 10.764 square feet). E & OE.

All dimensions and calculations are done in metric system (M/Sq.m), and imperial system (Ft/ Sq.ft) shown is for reference only.

TNRERA Registration No.TN/29/Building/0018/2021 available on www.tnrera.in